

MERIDIAN SYMPHONY PRESENTS

DANCE THE NIGHT AWAY

• ARTISTIC DIRECTOR AND CONDUCTOR JAMES OGLE

OCTOBER 19 • 7:30PM

MERIDIAN HIGH SCHOOL • 1900 W PINE AVE



WWW.MERIDIANSYMPHONY.ORG

MERIDIAN
symphony
ORCHESTRA

Dance The Night Away
Jim Ogle, Conductor & Artistic Director

Bahn Frei Polka	Eduard Strauss (1835-1916)
March Militaire Francaise	Camille Saint-Saëns (1835-1921)
Waltz from <i>Sleeping Beauty</i>	Peter Tchaikovsky (1840-1893)
Suite for Variety Orchestra:Waltz #2 Craig Purdy, conductor	Dimitri Shostakovich (1906-1975)
Slavonic Dance in C Major, Op. 46 No. I	Antonín Dvořák (1841-1904)
Pennywhistle Jig Falane Gerritsen, soloist	Henry Mancini (1924-1994)
Three Dance Episodes from <i>On the Town</i> I. The Great Lover II. Lonely Town III. Times Square	Leonard Bernstein (1918-1990)
Three Latin Dances	Jeff Tyzik (b. 1951)
Finale from <i>Western Symphony Ballet</i>	Hershy Kay (1919-1981)

*To ensure maximum enjoyment for all of our patrons,
we ask that you silence your phones and electronics.*

Musicians

Violin I

Jenny Iorga, Concertmaster (18)
Barbara Beck (34)
Jonelle Anderson-Darrow (3)
Amy Hicks (12)
Rachel Hubler (24)
Dan Malan (13)
Kayleigh Jack McGrath (6)
Melody Mitchell (24)*
Kim Moss (2)
Susan Stein*

Violin II

Savannah Byers, Principal (2)
Nell Dunivent-Hill (14)
Cathy Durfey (24)
Sally Felton (24)
Matt Hansen (5)
Nanette Jensen (20)
Cassie McCrea (18)*
Michelle Moore-Cuevas (30)
Melissa Reche (30)
Becky Schreppe (24)

Viola

Diane Shelton, Principal (23)
Richelle Greene (4)
Maria Le (11)
Susan Pliler (30)
Kathy Shaffer (9)
Bailey Wilson (5)*

Cello

Lorie Scherer, Principal (34)
Janelle Brown (29)
Dave Wynkoop (26)
Terry Berger (17)
Michal Yadlin (18)
Elizabeth Swanson (2)*
Richard Bowring (23)
Malia Balke (3)

David Stein
Aslen Whitmore

Bass

Ken Suchy, Principal (29)
Mark Fisher (13)
Scott Kim (8)

Flute

Jennifer Rhees, Principal (16)
Karla Brown (19)

Piccolo

Falane Gerritsen (5)

Oboe

Rachel Becker, Principal (4)
Mary Kienzle (7)
Brianna Hurst, Guest Principal

English Horn

Rachel Becker (4)

Clarinet

Kevin Bolen, Principal (7)
Jennifer Rudser (3)
Eddie Rudser

Bass Clarinet

Paul Darcy (29)

Alto Saxophone

Natalie Li
Andrew Schusterman
Minnie Aagard

Tenor Saxophone

Minnie Aagard
Brody Roman

Bassoon

Kevin Hall, Principal (16)
Parker Sailor (2)

Horn

Steve Sherer, Principal (24)
Rob Brings (3)
Meredith Messinger (16)
Jennifer Anderson (3)

Trumpet

Erik Larson, Principal (3)
Ted Stearns (1)
Dennis Keck (1)

Trombone

Chet Herbst
Mikyla Carpenter (6)

Bass Trombone

Lee Roby (32)

Tuba

Bj Mickels, Principal (9)

Percussion

Bailey Wilson, Principal* (5)
John Baldwin, (4)
Kelley Smith (4)
Sebastian Huntley

Timpani

Allen Ellis

Harp

Louise van der Eijk,
Principal (13)

Piano

Tawna Love, Principal (8)
Chad Spears

() Years with the MSO

* On Leave



Jim Ogle

Conductor & Artistic Director

Now in his ninth season, Maestro Ogle has brought a new level of excitement to the Meridian Symphony, expanding the orchestra's repertoire and presenting concerts that are entertaining, inspiring and challenging. Jim served as Artistic Director and Conductor of the Boise Philharmonic for 20 seasons, and upon his retirement in 2007 was named Conductor Emeritus. In July 2021, Jim retired from his position as Director of Development for the School of the Arts at Boise State University but remains active with the Music Department as a frequent guest conductor of the University Symphony Orchestra and Symphonic Winds Ensemble.

In 1972, Jim was a winner of the Malko International Conductor's Competition in Copenhagen, Denmark, and in 1974, won the North Carolina Symphony's first Young Conductor's Competition, where he served as Assistant and then Associate Conductor for 18 years. In 1980, he attended the prestigious Tanglewood Music Festival, summer home of the Boston Symphony, where he studied with Seiji Ozawa, Leonard Bernstein, Andre Previn and Sir Collin Davis.



Jenny Iorga

Concertmaster

Jenny Iorga, a native of Washington, holds a Bachelor's degree in Violin Performance from La Sierra University in Southern California where she studied with Lyndon Johnston Taylor, and a Master's degree in Violin Pedagogy from Boise State University where she studied with Craig Purdy.

She has been Concertmaster of the Meridian Symphony Orchestra since 2005 with a two year sabbatical to work on her Master's degree. Jenny has soloed with orchestras in Washington, California, and Idaho including the Meridian Symphony and the Boise State University Orchestras. She also teaches Suzuki violin lessons in her home studio to students ranging in age from 3 to 67 years old. When Jenny isn't teaching or performing, she loves walking, reading, sewing, cooking and spending time with her husband, Mike.



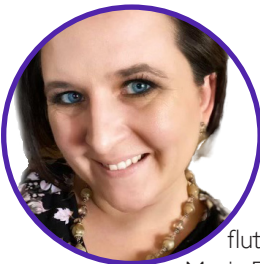
Craig Purdy

Guest Conductor

Craig Purdy, Professor of Music at Boise State University, teaches violin, coaches chamber music, teaches string pedagogy/literature, and is director of the University Orchestra Program. Mr. Purdy hails originally from New Jersey where he received his Bachelor of Music Degree in Violin Performance from the Eastman School of Music and his Master of Music Degree from the New England Conservatory. His primary teachers have included Newton Mansfield, of the New York Philharmonic, Charles Castleman, Masuko Ushioda, and Sally O'Reilly. Further studies have been with Joseph Silverstein and Joseph Gingold. He has studied chamber music with members of the Tokyo, Guarneri, Fine Arts, and Cleveland Quartets.

Mr. Purdy has performed as soloist and chamber musician across the U.S. and abroad. His performances include participation in numerous national and international festivals such as the Heidelberg Festival (Heidelberg, Germany), the Evian Festival (Evian, France), and Music from Bear Valley (Bear Valley, CA). He is former concertmaster of the Corning Philharmonic, the Winona Symphony, and the Eastman Philharmonia. Mr. Purdy continues to serve as concertmaster for several summer festival orchestras, most recently the Boise Summerfest Orchestra.

As a string educator and conductor, Mr. Purdy is a frequent orchestral clinician and conductor in Idaho and throughout the Northwest. Mr. Purdy maintains an active studio of university and private students. Members of his private studio have gone on to attend prestigious schools of music such as the Eastman School of Music, Juilliard School, and Oberlin Conservatory.



Falane Gerritsen

Flute Soloist

Falane Gerritsen has played piccolo in the Meridian Symphony since 2019. She also plays flute in the Treasure Valley Concert Band under the direction of Marcellus Brown. Falane has her flute performance degree from the University of Akron and her Music Education degree from Boise State. She teaches elementary music, choir, and percussion ensemble at Christine Donnell School of the Arts. She has been a music educator in the valley for nearly ten years. Falane serves as president of the Idaho Orff Schulwerk Association, which is an organization that provides professional development opportunities for music teachers. She is passionate about bringing the joy of music to young children.

2024-2025 Donors

President | \$2,500 & above

Meridian Fine Arts Foudation

Conductor | \$1,000-\$2,499

Benefactor | \$500-\$999

Carole Mcfadden & Chet Walborn

Earl Fulkerson Memorial

Maestro | \$250-\$499

Charles & Lauretta Gray

Rita Robertson

Karma Ellsworth

Barbara Cusick

Principal | \$100-\$249

Anne & Don Rex

Deanna Coble

Linda Simmons

Tom & Karla Reynolds

Merry Weirick

Lillian Watkins

Ellen Wheaton

Will & Jeannie Swenson

Virginia Neil

Rick & Jeanie Hoover

Patron | \$50-\$99

Aaron & Rachel Hubler

Rev. Jennifer & John Anttonen

James & Linda Vitale Sutherland

Friend | \$25-\$49

Marilyn Schmidt

Douglas & Nancy Rotman

A Note on Giving

It is through your generosity that we are able to rent and purchase music, pay for our practice and performing facilities and all of the things it takes to maintain the Meridian Symphony Orchestra. As you consider your options, we encourage you to consider a gift to the MSO.

The Meridian Symphony Orchestra is an Idaho non-profit organization.

Gifts to the MSO are tax-deductible under IRS section 501(c)3

Visit www.meridiansymphony.org for more information.

The Meridian Symphony offers a heartfelt thank you to the Meridian Arts Foundation for a sizable bequest that will support and enhance the symphony's outreach programs for music students in the years ahead. The foundation donated \$4,542 to the symphony as part of its efforts to distribute all funds under its control as it ceases operations. The one-time donation will be used to support the Symphony's annual Young Artist Competition, now in its 18th year. Music students will be the direct beneficiaries, with enhanced prize money for winners of the Young Artists Competition. Thank you, Meridian Arts Foundation!



"The richest child is poor without music"

We congratulate the Meridian Symphony Orchestra
for providing outstanding family-friendly
performances for the Treasure Valley!



YOUR FULL SERVICE MUSIC STORE SINCE 1950

Pianos | Keyboards | Organs

Band and Orchestra Instruments

Tuning | Repair | Piano Moving Services

Pro Audio | Guitars | Ukuleles | Print Music | Accessories

Idaho's Steinway & Sons Dealer

Staffed by trained musicians who understand your needs.

3410 N. Eagle Rd, Suite 150, Meridian (208) 342-5549

513 W. Karcher, Nampa (208) 461-2605

1160 Blue Lakes, Twin Falls (208) 734-2201

www.dunkleymusic.com

Thank You

Mark Dunkley, Dunkley Music

Cord Breuer, Band Director, Meridian High School

Zach Groeblichhoff, Choir Director, Meridian High School

Craig Purdy, Boise State University

Meredith Messenger, Graphic Designer/Illustrator

Cathy Durfey, Webmaster

About Us

The Meridian Symphony Orchestra is a 70-member ensemble dedicated to enriching the cultural life of our community and region by providing quality entertainment in a family-friendly, educationally focused environment. We are an all volunteer orchestra, with members from a diverse range of backgrounds, that performs "for the love of it."



Board of Directors

Dan Malan, President
Jennifer Rhees, Secretary
Ken Suchy, Treasurer
Kevin Bolen, Personnel Manager
Jim Ogle, Ex-officio
Jenny Iorga, Ex-officio
Richelle Greene, Social Media

Annette Matlock, Lobby Manager
Steve Sherer
Louise van der Eijk, Young Artist
Competition Manager
Terry Berger
Lee Roby
Jennifer Anderson



December 14 at 7:30pm | December 15 at 2pm

Be sure to join us for our Home for the Holidays Concert
at the Meridian High School Performing Arts Center!